

## D-DRAIN

STRAW BLANKETS  
PREMIER STRAW  
DOUBLE STRAW

CURLEX 1 SINGLE LAYER NATURAL  
CURLEX 2 DOUBLE LAYER NATURAL

CURLEX 1 SINGLE LAYER GREEN  
CURLEX 2 DOUBLE LAYER GREEN

DEWITT STRAWGUARD 200  
DEWITT FIBERGUARD 200

POLY JUTE NETTING

FILTER FABRIC: • 3.1 oz. • 3.5 oz. • 6 oz.

## NON-WOVEN GEOTEXTILES

- 4 oz. Fabric
- 4.5 oz. Fabric
- 8 oz. Fabric

## WOVEN GEOTEXTILES

- 5 oz. Fabric
- 6.5 oz. Fabric

SILT FENCE (*see fencing p.26*)

## ACCESSORIES:

E-STAPLES

RE-PINS

ANCHOR PINS

# erosion control & geotextiles

DeWitt erosion control and geotextile fabrics are the number one choice of professionals in the lawn and garden industry. Geotextiles will help reduce maintenance costs, while erosion control products are designed to conserve water while aiding healthy plant growth.

**Down to earth protection. Down to earth results.**

# Erosion Control

## D-Drain

If you're ready for a durable alternative to French drains, then you're ready for D-Drain. Made from a 3-dimensional, high-flow drainage core wrapped in filter fabric, D-Drain eliminates standing water by conveying it away. D-Drain requires less excavation, is easy to install, and costs less than pipe and gravel systems.

### Remove Standing Water in Yards and Landscape the Easy Way.

The D-Drain modules can be used in both natural and synthetic turf applications, and their narrow cross-section allows them to be installed without significantly disrupting playing areas.

#### Other advantages include:

- The volume of water and the amount of time the water stands on the field is reduced.
- Because its roots do not remain saturated for an extended period of time, the turf becomes healthier and more resistant to activities, disease, and weather.
- Activities may be resumed after a shorter period of time without the fear of damaging the turf.

#### Applications:

Typical Drainage Layouts  
Highway Edge Drainage  
Synthetic Field Drainage  
Foundation Drainage

## D-Drain



D-Drain is ideally suited for yards, planting beds, athletic fields, playgrounds, and golf courses.



3-dimensional, high-flow drainage core

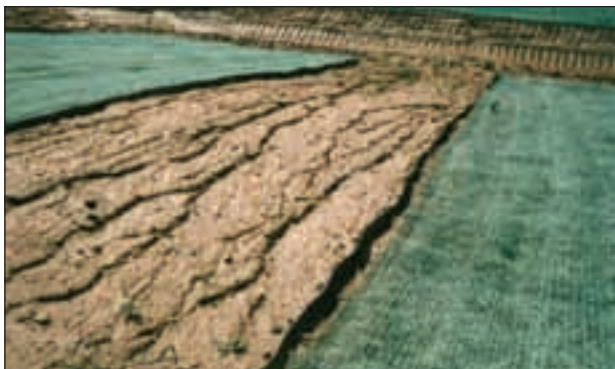
### D-Drain

UPC MFG #042579 • SCC MFG# 00042579

ITEM	DESCRIPTION	UPC	SCC	WT	CI PK
SWD6"-165	6" X 165' SITE WATER DRAIN	816712		35.00	1
SWD6C	6" CORNER	814657		0.48	1
SWD6EO	6" END OUTLET	814671		0.36	1
SWD6EC	6" END CAP	814695		0.28	1
SWD6S	6" SPLICE	814688		0.28	1
SWD6SD	6" STEP DOWN	814725		0.92	1
SWD6SO	6" SIDE OUTLET	814718		0.60	1
SWD6TC	6" T-CONNECTOR	814664		0.56	1



Our complete line of erosion control products are safe for children, pets and homes.



Green Culex Blankets in commercial slope application

### Premier Straw (AEC-SS)

- Constructed from biodegradable Midwest straw fibers
- Photodegradable netting on top
- Temporary protection for grass seed and topsoil during germination
- Used on highway slopes and embankments and utility right-of-ways

- **Slope/Channel – 3:1 and flatter**

### Double Straw (AEC-DS)

- Constructed from biodegradable Midwest straw fibers
- Photodegradable netting on top and bottom
- Temporary protection for grass seed and topsoil during germination
- Used on highway slopes and embankments and utility right-of-ways

- **Slope/Channel – 2:1 and flatter**

### Curlex 1 Single Layer Natural (AEC-SENAT4) & (AEC-SENAT8)

- Biodegradable Great Lakes Aspen curled wood excelsior with 80% 6" fibers or greater
- Photodegradable netting on top
- Used on highway embankments, ditch bottoms, slopes, bridges, approaches and medians
- Used for residential, commercial & industrial developments
- Used for urban drainage, stream banks and waterways

- **Slopes to 2:1, Channel to 5 ft. /S**

### Curlex 2 Double Layer Natural (AEC-DENAT8)

- Biodegradable Great Lakes Aspen curled wood excelsior with 80% 6" fibers or greater
- Photodegradable netting on top and bottom
- Used on highway embankments, ditch bottoms, slopes, bridges, approaches and medians
- Used for residential, commercial and industrial developments
- Used for urban drainage, stream banks and waterways

- **Slopes to 1.5:1, Channel to 7 ft. /S**

### Curlex 1 Single Layer Green (AEC-SEGRN4) & (AEC-SEGRN8)

- Biodegradable Great Lakes Aspen curled wood excelsior with 80% 6" fibers or greater
- Photodegradable netting on top
- Used on highway embankments, ditch bottoms, slopes, bridges, approaches and medians
- Residential, commercial and industrial developments
- Used for urban drainage, stream banks and waterways

- **Slopes to 2:1, Channel to 5 ft. /S**

*Dyed green for aesthetic purposes to give look of grass already in place*

### Curlex 2 Double Layer Green (AEC-DEGRN8)

- Biodegradable Great Lakes Aspen curled wood excelsior with 80% 6" fibers or greater
- Photodegradable netting on top and bottom
- Used on highway embankments, ditch bottoms, slopes, bridges, approaches and medians
- Residential, commercial and industrial developments
- Used for urban drainage, stream banks and waterways

- **Slopes to 1.5:1, Channel to 7 ft. /S**

*Dyed green for aesthetic purposes to give look of grass already in place*



## Erosion Control Blankets

### Curlex 1 & 2 and Premier Straw

UPC MFG #042579 • SCC MFG# 00042579

ITEM	DESCRIPTION	UPC	SCC	WT	CI	PK
AEC-SEGRN4	4' X 101.25' GREEN	817634		37		1
AEC-SEGRN8	8' X 101.25' GREEN	817641		74		1
AEC-SENAT4	4' X 101.25' NATURAL	818396		33		1
AEC-SENAT8	8' X 101.25' NATURAL	817658		66		1
AEC-DEGRN8	8' X 101.25' GREEN	817603		66		1
AEC-DENAT8	8' X 101.25' NATURAL	817610		74		1
AEC-SS	8' X 112.5' SINGLE STRAW	817665		50		1
AEC-DS	8' X 112.5' DOUBLE STRAW	817627		50		1



Install using DeWitt biodegradable E-Staples

# Natural Seed Germination & Erosion Control Blanket

Biodegradable • Photodegradable



Aspen wood fibers naturally dissolve in soil.

## StrawGuard & FiberGuard 200

UPC MFG #042579 • SCC MFG# 00042579

ITEM	DESCRIPTION	UPC	SCC	WT	CI	PK	PK/CS
SG200CS	4' X 50' STRAW GUARD 200 RETAIL CASE	817825	502660	99	29991	1	9
SG200PAL	4' X 50' STRAW GUARD RETAIL PALLET PACK	817825	502646	462	93081	1	30
FG200CS	4' X 50' FIBER GUARD 200 RETAIL CASE	817832	502677	144	29991	1	9
SFG200PAL	4' X 50' STRAW & FIBER GUARD 200 MIXED RETAIL PALLET PACK 15 ROLLS EACH	817825 817832	502653	522	93081	1	30



StrawGuard 200 & FiberGuard 200 Mixed Split Pallet



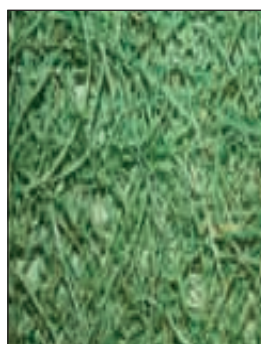
Erosion blankets are easy to unroll and install.



StrawGuard 200 Pallet

# DeWitt FIBER GUARD<sup>200</sup>

Your Erosion Control Solution



#### PRODUCT FEATURES

- Natural Aspen wood fibers
- Expands to hold seed and fertilizer
- Dyed green to look like grass
- Faster germination
- Single photodegradable netting on top of wood fibers
- Prevents soil erosion
- Protects seed in germination
- Lightweight and easy to use
- 4 ft. x 50 ft. • 200 sq. ft.
- Each roll includes 12-4" biodegradable stakes
- Safe for home, children & pets

AVAILABLE IN THE FOLLOWING:  
9 Pack Displays and 15/15  
Fiber & Straw Split Pallet

# STRAW GUARD<sup>200</sup>

Your Seed Germination Solution

#### PRODUCT FEATURES

- Faster germination
- Seed doesn't wash away
- Prevents soil erosion
- Saves water
- Non-toxic, biodegradable
- Lightweight and easy to use
- Perfect for slopes
- 4 ft. x 50 ft. • 200 sq. ft.
- Each roll includes 12-4" biodegradable stakes
- Single photodegradable netting on top of straw fibers
- Safe for home, children & pets



AVAILABLE IN THE FOLLOWING:  
9 Pack Displays, 30 Pack Pallet  
or 15/15 Fiber & Straw Split Pallet

## Filter Fabric

DeWitt 3.1, 3.5 and 6 oz. non-woven, needle-punched Filter Fabric can be used as a stabilizing force to prevent unwanted movements in excavated areas such as roads, sidewalks, patios, and embankments. This product is excellent protection against damaging soil when placed around drainage pipes, retaining walls, and other buried or exposed fixtures.

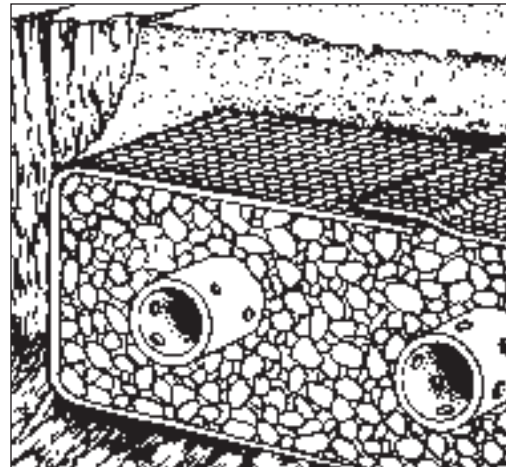
## Poly Jute Netting

DeWitt Poly Jute Netting is used as a soil stabilizer and erosion control agent on slopes, newly seeded turf and other ground surfaces to prevent washouts and protect from wind erosion. Poly Jute Netting is constructed of 100% polypropylene with a unique combination of leno yarn and tape providing strength and durability. It won't unravel like traditional woven burlap, and offers cost savings over straw. Poly Jute Netting is safe, photodegradable, non-toxic to healthy soil and plants, and will not support growth of fungus or mold. Poly Jute Netting installs easily and allows air and water to pass through to the soil to enhance plant growth. For best results, use Anchor Pins or Re-Pins to secure Jute Netting.

### Filter Fabric

UPC MFG #042579 • SCC MFG# 00042579

ITEM	OZ	DESCRIPTION	UPC	SCC	WT	CI	PK
FF3360-3.1	3.1	3' X 360' BULK	817498		29		1
FF4360-3.1	3.1	4' X 360' BULK	817504		37		1
FF6360-3.1	3.1	6' X 360' BULK	817511		53		1
FF12.5360-3.1	3.1	12' 6" X 360' BULK	817689		105		1
FF3100	3.5	3' X 100' BULK	812424		9		1
FF3360-N	3.5	3' X 360' BULK	815272		30		1
FF4100	3.5	4' X 100' BULK	812431		12		1
FF4360-N	3.5	4' X 360' BULK	815289		45		1
FF6360-N	3.5	6' X 360' BULK	815302		68		1
FF8360-N	3.5	8' X 360' BULK	815319		90		1
FF12.5360-N	3.5	12' 6" X 360' BULK	815236		135		1
FF6OZ4360	6	4' X 360' BULK	815340		68		1
FF6OZ12.5360	6	12' 6" X 360' BULK	815333		230		1
FF6OZ15	6	15' X 300' BULK	815357		230		1



Filter Fabric

### Poly Jute Netting

UPC MFG #042579 • SCC MFG# 00042579

ITEM	DESCRIPTION	UPC	SCC	WT	CI	PK
PJN4216	4' 6" X 216' BULK	814374		10		1
PJN4432	4' 6" X 432' BULK	814367		19		1
PJN6216	6' 3" X 216' BULK	814350		15		1
PJN6432	6' 3" X 432' BULK	814343		29		1
PJN8216	8' X 216' BULK	814336		19		1
PJN8432	8' X 432' BULK	814329		38		1
PJN12432	12' 6" X 432' BULK	814312		59		1



Poly Jute Netting

### Non Woven Geotextiles

ITEM	DESCRIPTION	UPC	SCC	WT	CI	PK
DNG105-12.5360	4 OZ GEO 105 12.5' X 360'	817542		150		1
DNG105-15300	4 OZ GEO105 15' X 300'	817559		150		1
DNG120-12.5360	4.5 OZ GEO 120 12.5' X 360'	817672		170		1
DNG120-15300	4.5 OZ GEO 120 15' X 300'	817566		170		1
DNG205-12.5360	8 OZ GEO 205 12.5' X 360'	817818		290		1
DNG205-15300	8 OZ GEO 205 15' X 300'	817573		290		1

### Woven Geotextiles

ITEM	DESCRIPTION	UPC	SCC	WT	CI	PK
DWG200-12.5432	5 OZ GEO 200 12.5' X 432'	817528		205		1
DWG200-15360	5 OZ GEO 200 15' X 360'	818235		205		1
DWG315-12.5360	6.5 OZ GEO 315 12.5' X 360'	818259		225		1
DWG315-12.5432	6.5 OZ GEO 315 12.5' X 432'	817535		270		1
DWG315-15300	6.5 OZ GEO 315 15' X 300'	818273		225		1



Woven geotextile installation

# Geotextiles

## Non-Woven Geotextiles

are comprised of strong polypropylene staple fibers. They are designed to allow for drainage and soil filtration, separation, permanent erosion control, asphalt overlay, and cushioning.

### **DNG105-12.5360** **DNG105-15300**

- Used for separation, drainage and filtration
- Landfill drainage & filtration subsurface drainage, highways, etc.
- 105 pound grab tensile strength
- Designed to handle environmental problems found in roads, embankments, landfills, airfields and sports construction projects

### **DNG120-12.5360** **DNG120-15300**

- Used for separation, drainage and filtration
- Landfill drainage & filtration subsurface drainage, highways, etc.
- 120 pound grab tensile strength
- Designed to handle environmental problems found in roads, embankments, landfills, airfields and sports construction projects

### **DNG205-15300**

- Used for embankment protection, erosion control, ground stabilization, geo-membrane underliner and heavy-duty drainage protection
- 205 pound grab tensile strength
- Applications – separation, reinforcement and filtration

---

## Woven Geotextile Fabrics

are high-quality polypropylene fabrics that stabilize the sub grade and separate soil from the aggregate. With everything in place, you'll experience a reduction in maintenance costs and extended life of your pavement structure. These fabrics work well for unpaved structures as well.

### **DWG200-12.5432**

- Industry-standard woven geotextile
- Designed for three primary functions – separation (separating the native sub-grade from an aggregate layer), reinforcement (reinforcing an area by distributing weight over a wider area) and filtrating (retaining soil while allowing the passage of water)
- 200 pound grab tensile strength
- Used underneath an aggregate overlay

### **DWG315-12.5432**

- Uses – roadway and railway stabilization and reinforcement – parking lots, residential streets, roadways
- High tensile strength for soil separation over moderate sub-grade • 315 pound grab tensile strength

